

OPEN SPACE IMPLEMENTATION - PHASE I MATERIALS AND PRODUCTS PALETTE



**JOHNS HOPKINS
UNIVERSITY**

**HOMEWOOD CAMPUS
BALTIMORE, MARYLAND**

INDEX

Sheet	Description
1	Title Sheet
2	Project Overview
3	Overall Site Plan
4	Paving Brick
5	Paving Marble
6-9	Granite Curb, Pavers, Shoreline
10-13	Storm Drain Details
14-16	Bollards: Ped., Vehicular, Removable
17-20	Benches
21	Bike Rack
22	Hand Railing
23	Chain Link Fence
24	Steel Picket Fence
25	Emergency Call Box
26	Pier Mounted Fixture
27-28	Pathway Light - Post, Fixture
29	Trash Receptacle
30	Tree Pit
31	Stairs: Marble, Brick
32	Krieger Court
33	JHU Sign Wall At Charles Street
34	Aggregate Walk



Client: Offices of Facilities & Real Estate
Johns Hopkins University
Greenhouse / 3400 N. Charles St.
Baltimore, Maryland 21218-2690

Donor Rep.: Kolkowitz and Kusske
Architecture, Landscape Architecture
12 Crest Road
Rowayton, CT 06853

Design Team:



**RUMMEL, KLEPPER
& KAHL, LLP**
Consulting Engineers

CARE OF TREES
Tree Specialist



AYERS SAINT GROSS
Architects & Campus Planners

JMT
Surveyors



**MAHAN RYKIEL
ASSOCIATES INC.**
Landscape Architects

**CLINE, BETTRIDGE,
BERNSTEIN**
Lighting Consultant



MICHAEL VERGASON
Landscape Architects

LYNCH & ASSOCIATES
Irrigation Consultant

Construction Manager:



HENRY H. LEWIS

January 2004

Open Space Master Plan

Many visitors to Homewood are pleasantly surprised. They do not expect flowering trees, quiet gardens, wide open green spaces and Georgian architecture on an urban campus.

Those are their first impressions.

Then they notice the 18-wheelers competing with pedestrians for access to Levering Hall. Service trucks pulled up on sidewalks. A "temporary" building that has stood almost since World War II. A road network that defines the concept, "You can't get there from here."

With a new student arts center nearing completion and the Whitaker Biomedical Engineering Institute's Clark Hall up next, to be followed by a Hodson Trust-funded classroom building, a student recreation center, a nuclear magnetic resonance facility and lots more down the road, the problems are only going to get harder to fix.

That's why President William R. Brody, the university administration and the Homewood deans chose to commission a new Homewood campus master plan in 1999. Change and growth are inevitable, they reasoned, and, if handled well, can result in a campus that's not only larger but more attractive and more human as well.

The university engaged Ayers/Saint/Gross, a Baltimore-based architecture firm., to lead a year-long planning process. This effort involved discussions and consultation with literally hundreds of Hopkins people --from the president to members of the incoming class of 2003 --and with representatives of the university's neighbor communities.

Anonymous Donor

An anonymous donor is backing an ambitious effort to make the Open Space Plan happen sooner rather than later, now rather than a decade from now. In 180 days, from just after commencement in May 2000 to Christmas 2000, construction crews swarmed over the upper and lower quads and the plaza in front of the AMRs. By August 2001, work was completed on an area of campus covering about 24 acres, from University Parkway south to Shriver Hall, and from the AMRs west to Decker Garden and the Bloomberg Center.

The donor, President William R. Brody said, "has put his resources on the table and challenged us to transform Homewood into the finest urban campus in the nation." During the drafting of the new campus master plan over the past year, a consensus formed that, as impressive as it is, Homewood's overall appearance and ambience are not yet equal to the university's stature.

"The concept of a serene, pedestrian-friendly campus with a signature design and a beauty all its own, caught the imagination of our donor just as it did that of the campus community," Brody said. "We owe him an enormous debt of gratitude for giving us a chance to put this part of the plan on such a fast track. Otherwise, it might have taken years to complete."

Design Team (February 2000 Through August 2001)

This dramatic make over in a short period of time has been a challenge. However, the design team has put their best effort to make this project reality. The design team members engaged by JHU and managed by RK&K include:

- Lead Consultant, Civil Site & Design Engineers: Rummel, Klepper & Kahl, LLP, Baltimore
- Construction Managers: Henry Lewis Contractors Inc., Owings Mills
- Architects/Master Planners: Ayers/Saint/Gross, Baltimore
- Landscape Architects: (Concepts and Final Design) Michael Vergason, Arlington, Va.
- Landscape Architects: (Final Design) Mahan Rykiel Associates Inc., Baltimore
- Donor's Representative: Kolkowitz Kusske, Norwalk, Conn.
- Tree Preservation: Care of Trees Inc., Herndon, Va.
- Irrigation: Lynch & Associates, Beltsville, Md.
- Surveyors: JMT, Baltimore
- Speciality Lighting: Cline Bettridge Bernstein Lighting Design, New York

Great Excavations Construction (May 2000 Through August 2001)

Asphalt uprooted. Brick walkways laid down in place of roads. Most cars and trucks diverted from the core of campus. Newly landscaped quads, with consistent lighting fixtures and benches. Building and directional signs where past visitors have faced the moral equivalent of a maze.

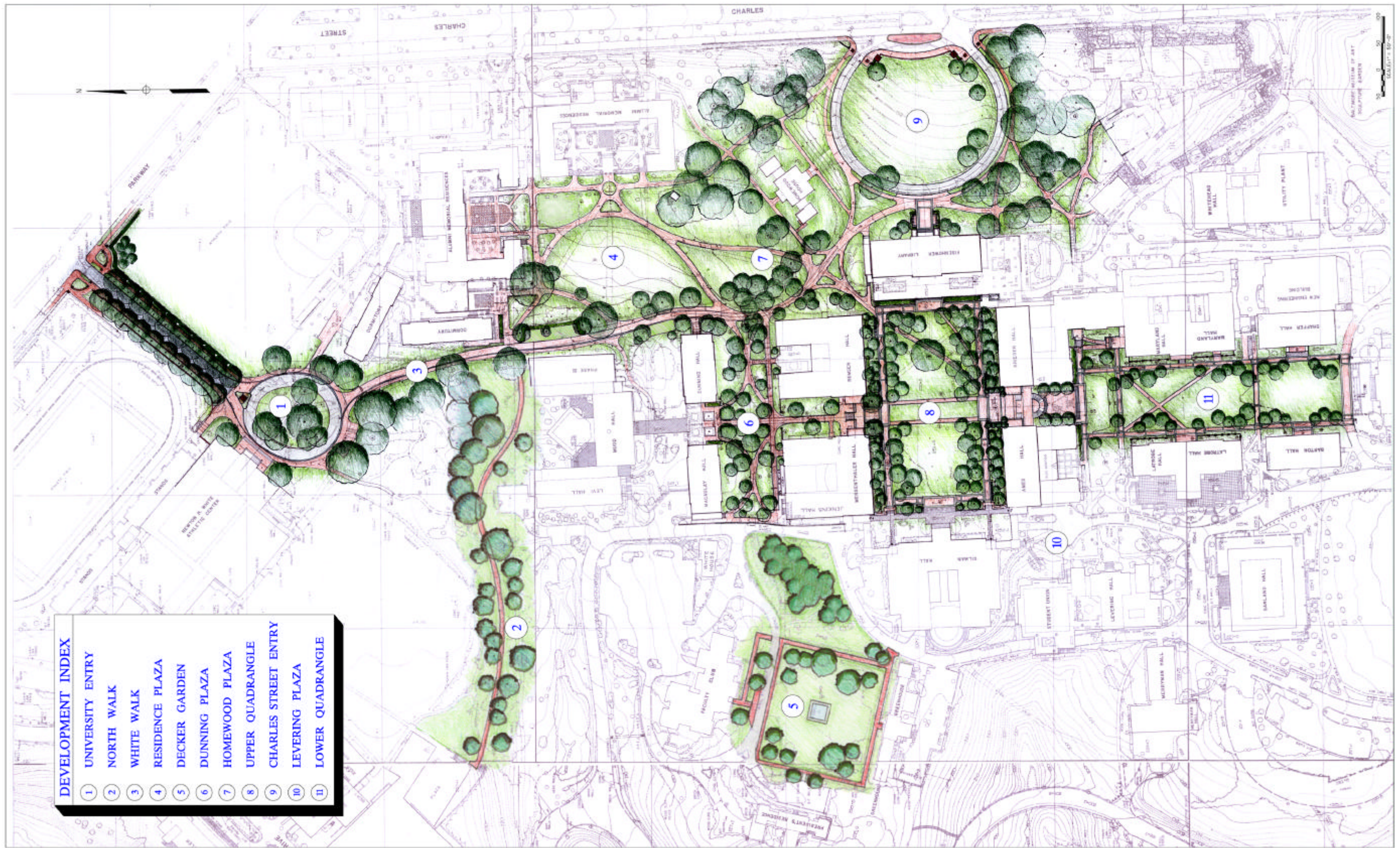
Bricks--more than 1 million, plus marble and granite accent stones--were ordered and many have already been shipped to campus. Expert bricklayers and other skilled workers were recruited from as far away as southern Pennsylvania and northern Virginia. Plans were being drawn up for installation of several hundred trees and shrubs, and for quiet areas for contemplation and discussion.

The Great Excavations construction blitz is the first step in completion of the master plan. The plan is expected to guide development and building location at Homewood for decades.

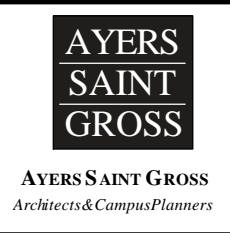
Materials and Products Palette

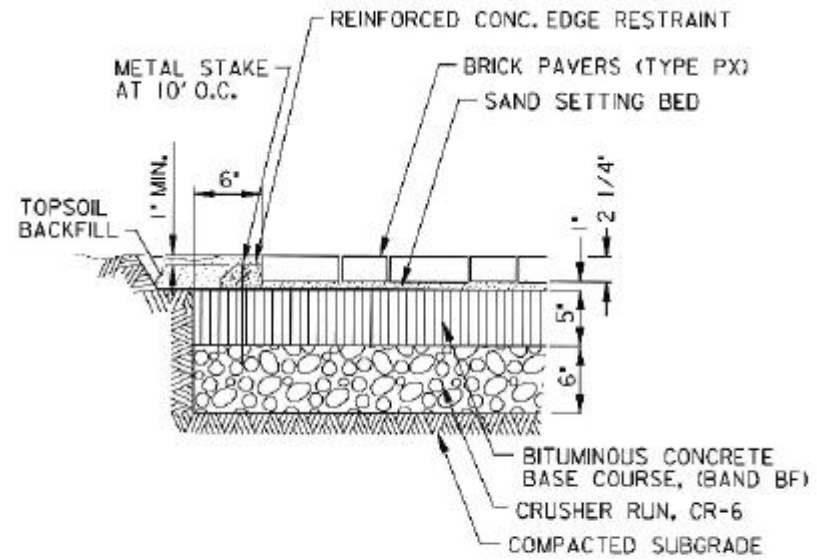
This booklet was prepared by RK&K Engineers to document design and construction decisions and details. It contains site details, photographs and written information on manufacturers & finish specifications for the materials and products installed during the Great Excavations Construction. It is intended to be used as reference material for the continuing implementation of the master plan.

Source: JHUHomewood Great Excavations Website, 2000.



- DEVELOPMENT INDEX**
- 1 UNIVERSITY ENTRY
 - 2 NORTH WALK
 - 3 WHITE WALK
 - 4 RESIDENCE PLAZA
 - 5 DECKER GARDEN
 - 6 DUNNING PLAZA
 - 7 HOMEWOOD PLAZA
 - 8 UPPER QUADRANGLE
 - 9 CHARLES STREET ENTRY
 - 10 LEVERING PLAZA
 - 11 LOWER QUADRANGLE

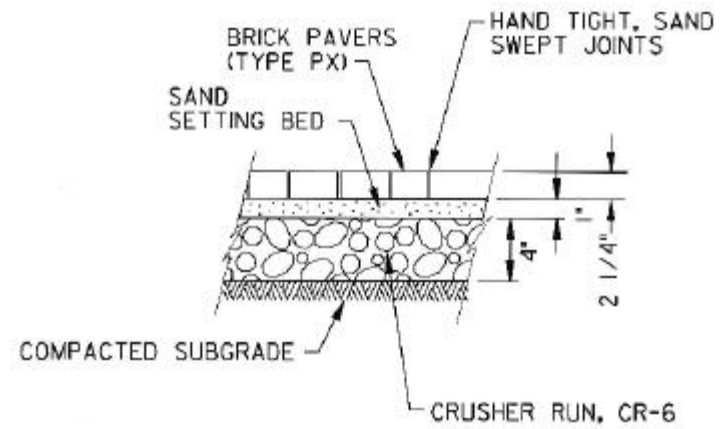




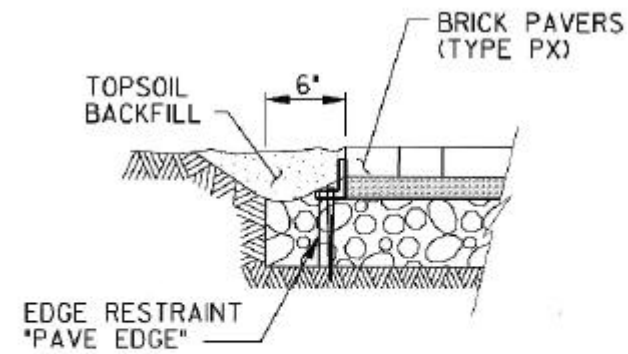
**BRICK PAVER EDGING SECTION
(VEHICULAR)
(NTS)**



PAVING BRICK- VEHICULAR



**BRICK AND SPECIAL PLAZA
PAVEMENT (PEDESTRIAN)
(NTS)**



**PAVER EDGING
SECTION (PEDESTRIAN)
(NTS)**



PAVING BRICK- PEDESTRIAN

MANUFACTURER: PINE HALL BRICK

MODEL NAME: PATHWAY FULL RANGE

FINISH SPECIFICATIONS: HEAVY VEHICULAR PAVING BRICK, TYPE R, ASTM C 1272, APPLICATION PX



JOHNS HOPKINS UNIVERSITY
BALTIMORE, MARYLAND



RUMMEL, KLEPPER & KAHL, LLP
Consulting Engineers



AYERS SAINT GROSS
Architects & Campus Planners



MAHAN RYKIEL ASSOCIATES INC.
Landscape Architects



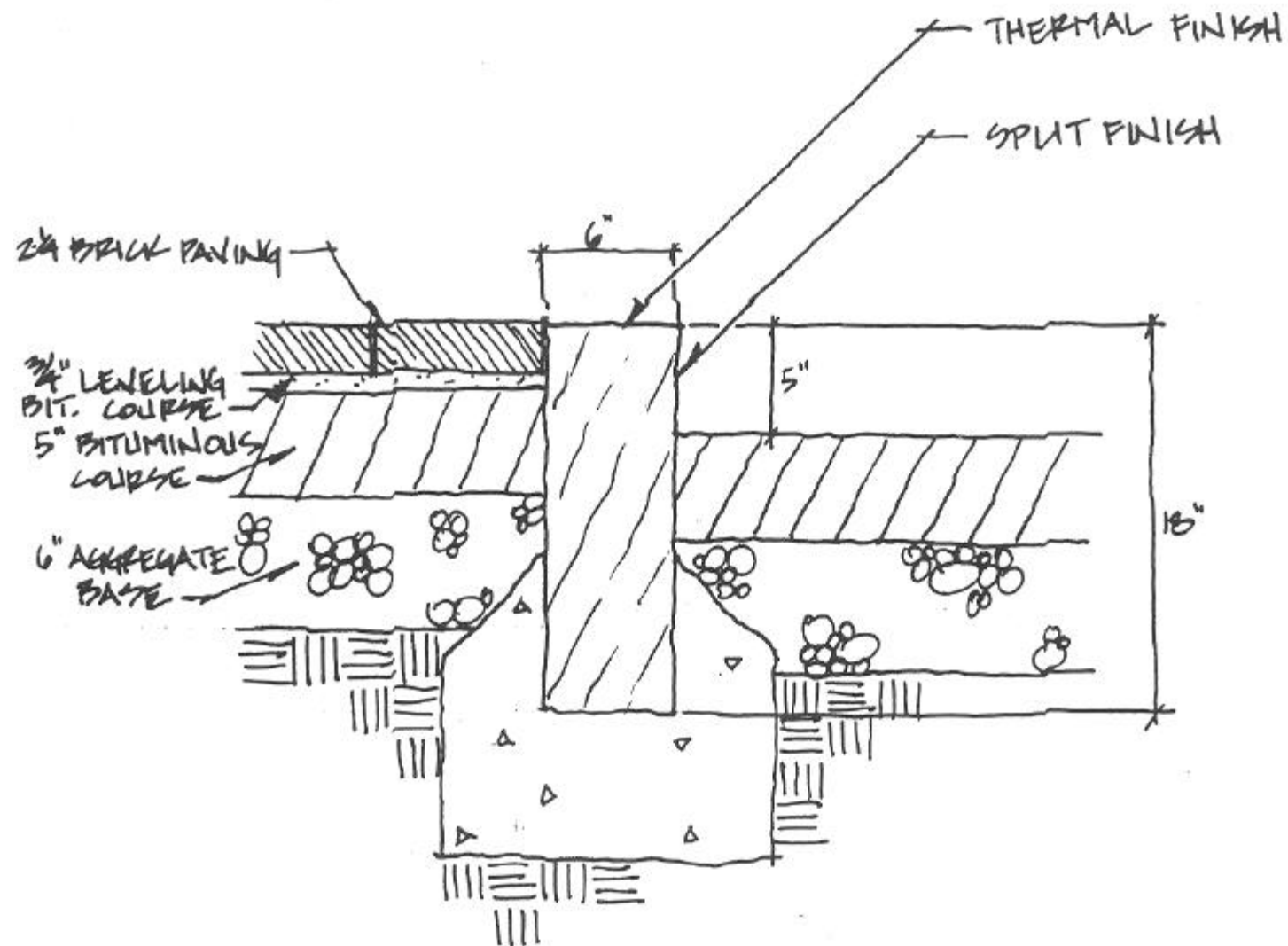
MICHAEL VERGASON
Landscape Architects

NO.	DATE	DESCRIPTION

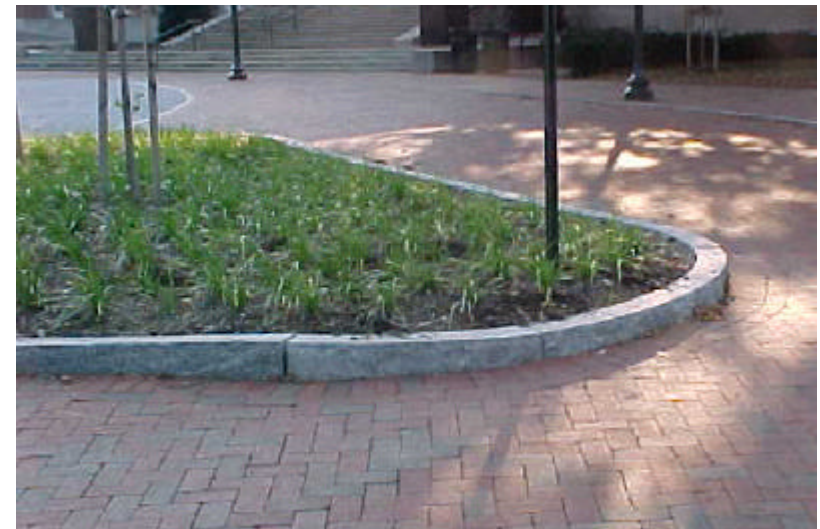
JHU: OPEN SPACE IMPLEMENTATION - PHASE I
PAVING BRICK

August 2001

Sheet 4 of 34



6' STRAIGHT GRANITE CURB @ UNIVERSITY ENTRY



GRANITE CURB



GRANITE CURB

MANUFACTURER: NEW ENGLAND STONE, INC.

MODEL NAME: WOODBURY S

FINISH SPECIFICATIONS: THERMAL TOP, SPLIT FACE,
SAWN SIDES & BOTTOM



JOHNS HOPKINS UNIVERSITY
HOMEWOOD CAMPUS
BALTIMORE, MARYLAND



RUMMEL, KLEPPER & KAHL, LLP
Consulting Engineers



AYERS SAINT GROSS
Architects & Campus Planners



MAHAN RYKIEL ASSOCIATES INC.
Landscape Architects



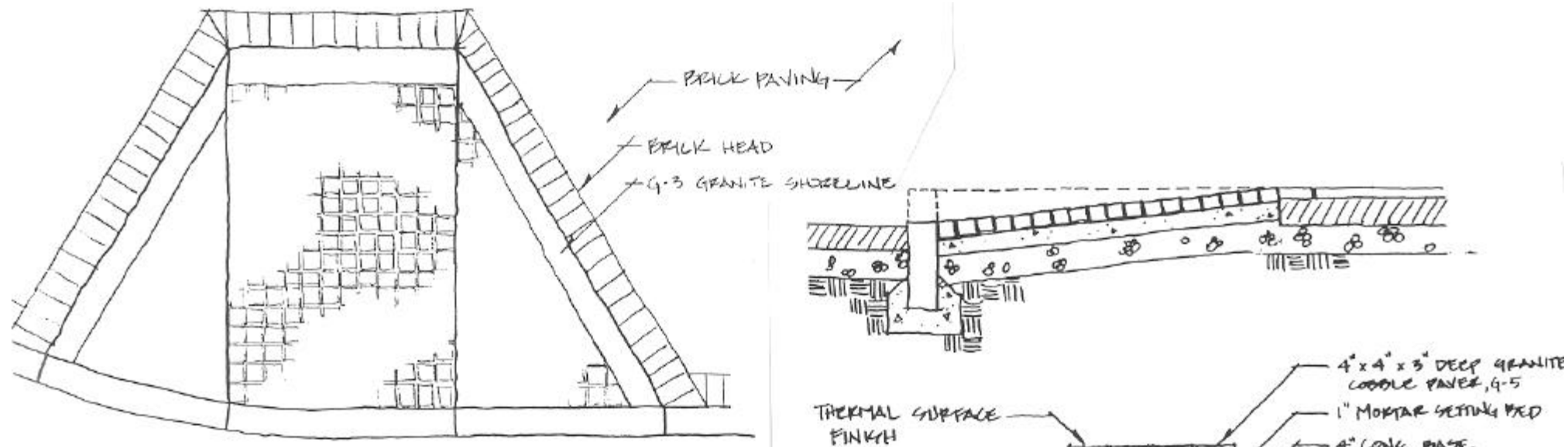
MICHAEL VERGASON
Landscape Architects

Revisions

JHU: OPEN SPACE IMPLEMENTATION - PHASE I
GRANITE CURB

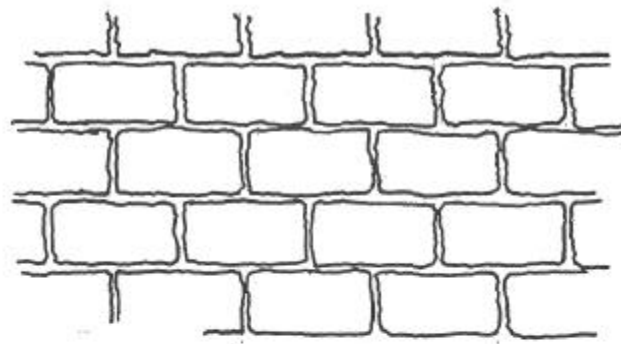
August 2001

Sheet 6 of 34



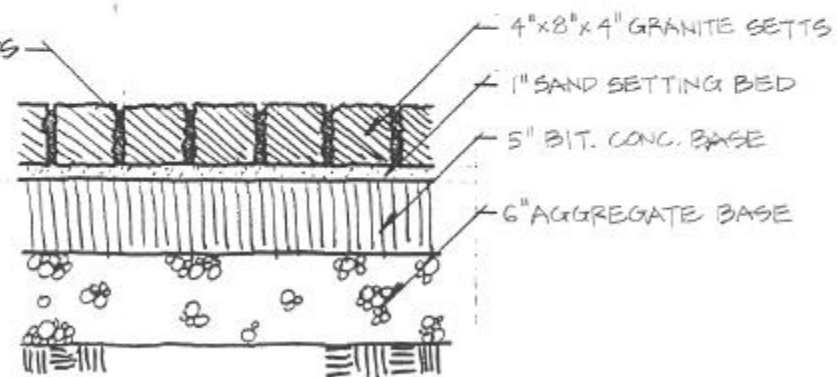
BALTIMORE CITY STANDARD HC RAMP
W/ GRANITE SURFACE PAVING

PLAN



STONE DUST SWEEP JOINTS

SECTION



TYPICAL GRANITE VEHICULAR PAVING



GRANITE HC RAMP PAVERS



GRANITE VEHICULAR PAVERS

MANUFACTURER: NEW ENGLAND STONE, INC.

MODEL NAME: WOODBURY S

FINISH SPECIFICATIONS: HC RAMP: THERMAL TOP,
SAWN SIDES & BOTTOM
VEHICULAR: 5 SIDES SPLIT FACE,
SAWN BOTTOM



JOHNS HOPKINS
UNIVERSITY
HOMEWOOD CAMPUS
BALTIMORE, MARYLAND



RUMMEL, KLEPPER
& KAHL, LLP
Consulting Engineers



AYERS SAINT GROSS
Architects & Campus Planners



MAHAN RYKIEL
ASSOCIATES INC.
Landscape Architects



MICHAEL VERGASON
Landscape Architects

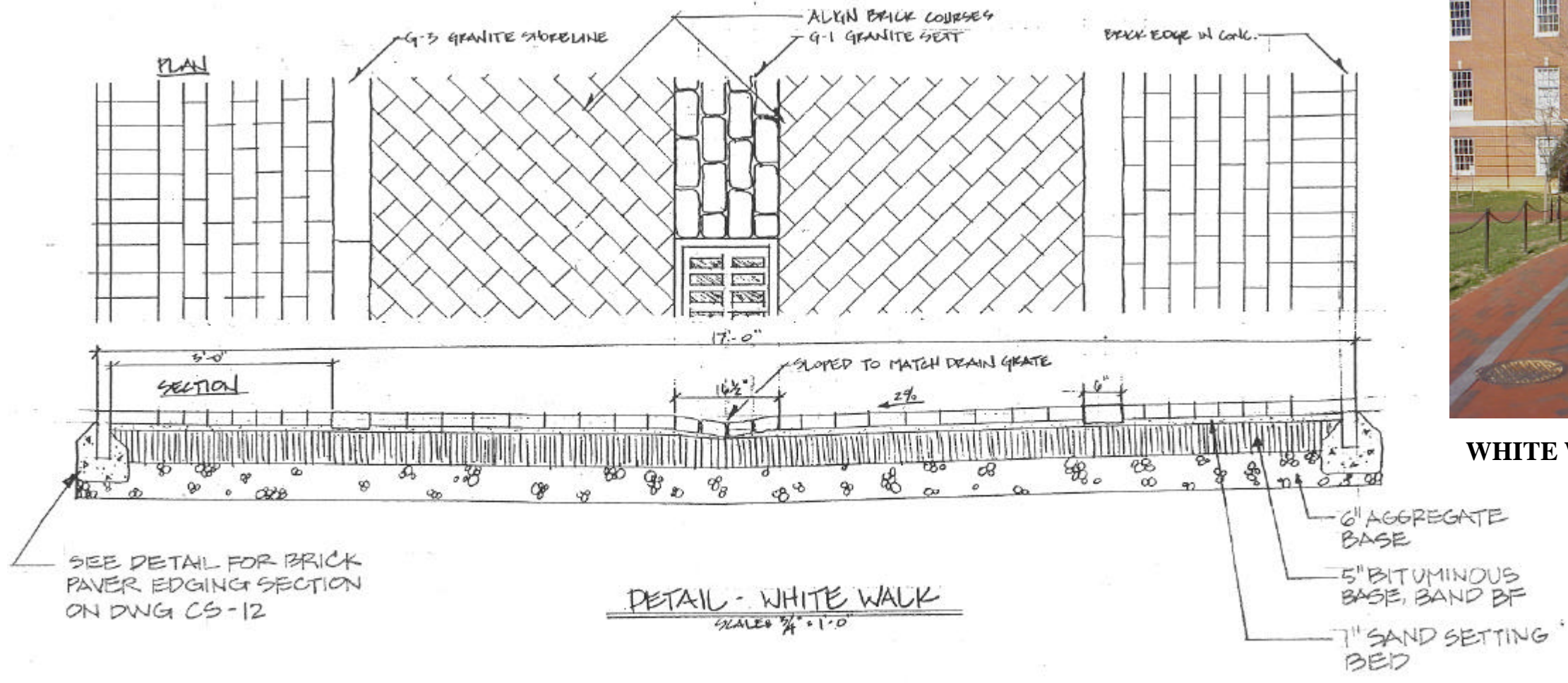
Revisions

JHU: OPEN SPACE IMPLEMENTATION - PHASE I
GRANITE PAVERS

August 2001

Sheet 7 of 34

DWG NO. 12



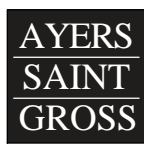
WHITE WALK PAVERS



JOHNS HOPKINS
UNIVERSITY
HOMEWOOD CAMPUS
BALTIMORE, MARYLAND



RUMMEL, KLEPPER
& KAHL, LLP
Consulting Engineers



AYERS SAINT GROSS
Architects & Campus Planners



MAHAN RYKIEL
ASSOCIATES INC.
Landscape Architects

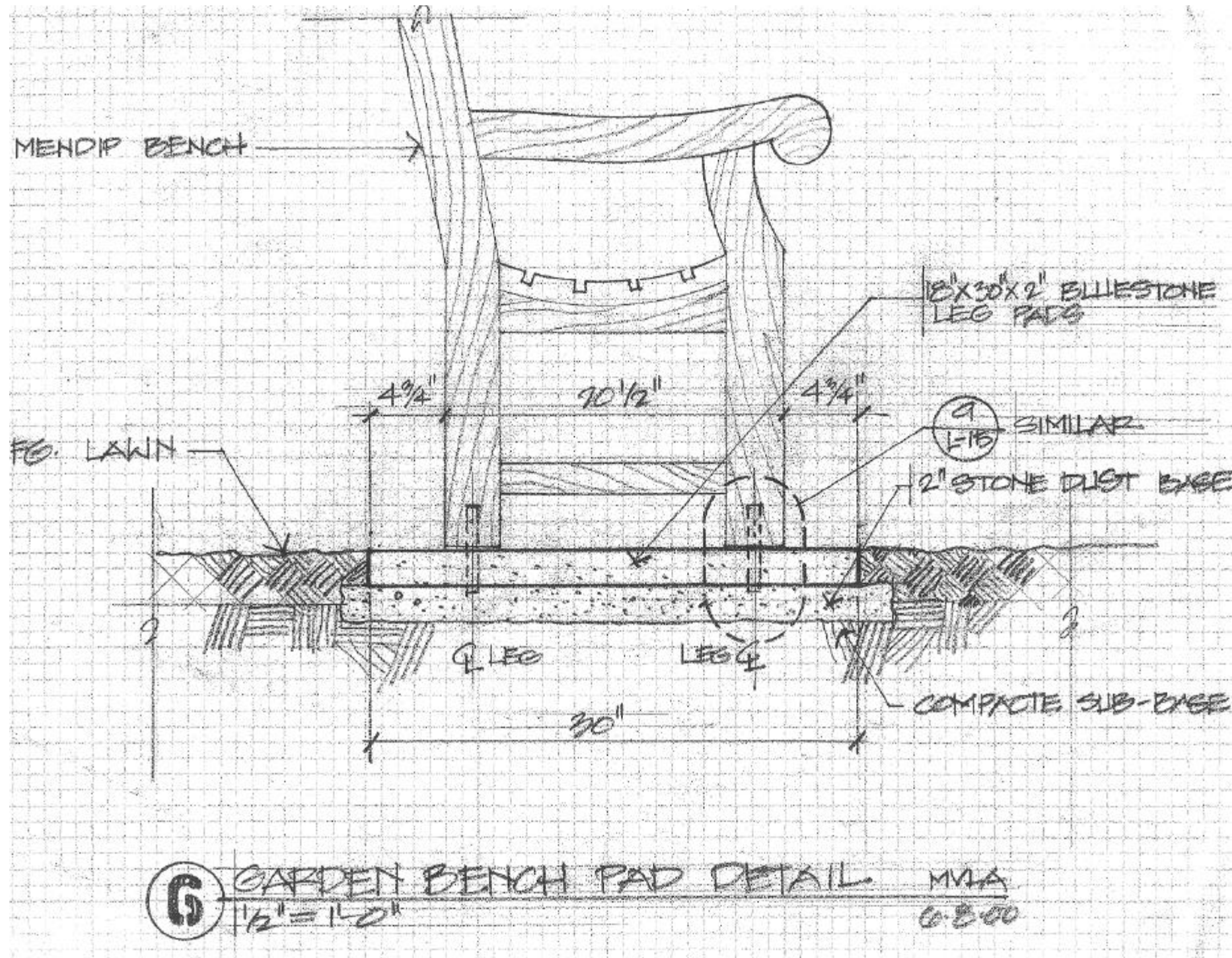


MICHAEL VERGASON
Landscape Architects

JHU: OPEN SPACE IMPLEMENTATION - PHASE I
WHITE WALK

August 2001

Sheet 8 of 34



INFORMAL / GARDEN BENCH

MANUFACTURER: COUNTRY CASUALS

MODEL NAME: MENDIP

FINISH SPECIFICATIONS: TEAK WOOD



JOHNS HOPKINS
UNIVERSITY
HOMEWOOD CAMPUS
BALTIMORE, MARYLAND



RUMMEL, KLEPPER
& KAHL, LLP
Consulting Engineers



AYERS SAINT GROSS
Architects & Campus Planners



MAHAN RYKIEL
ASSOCIATES INC.
Landscape Architects



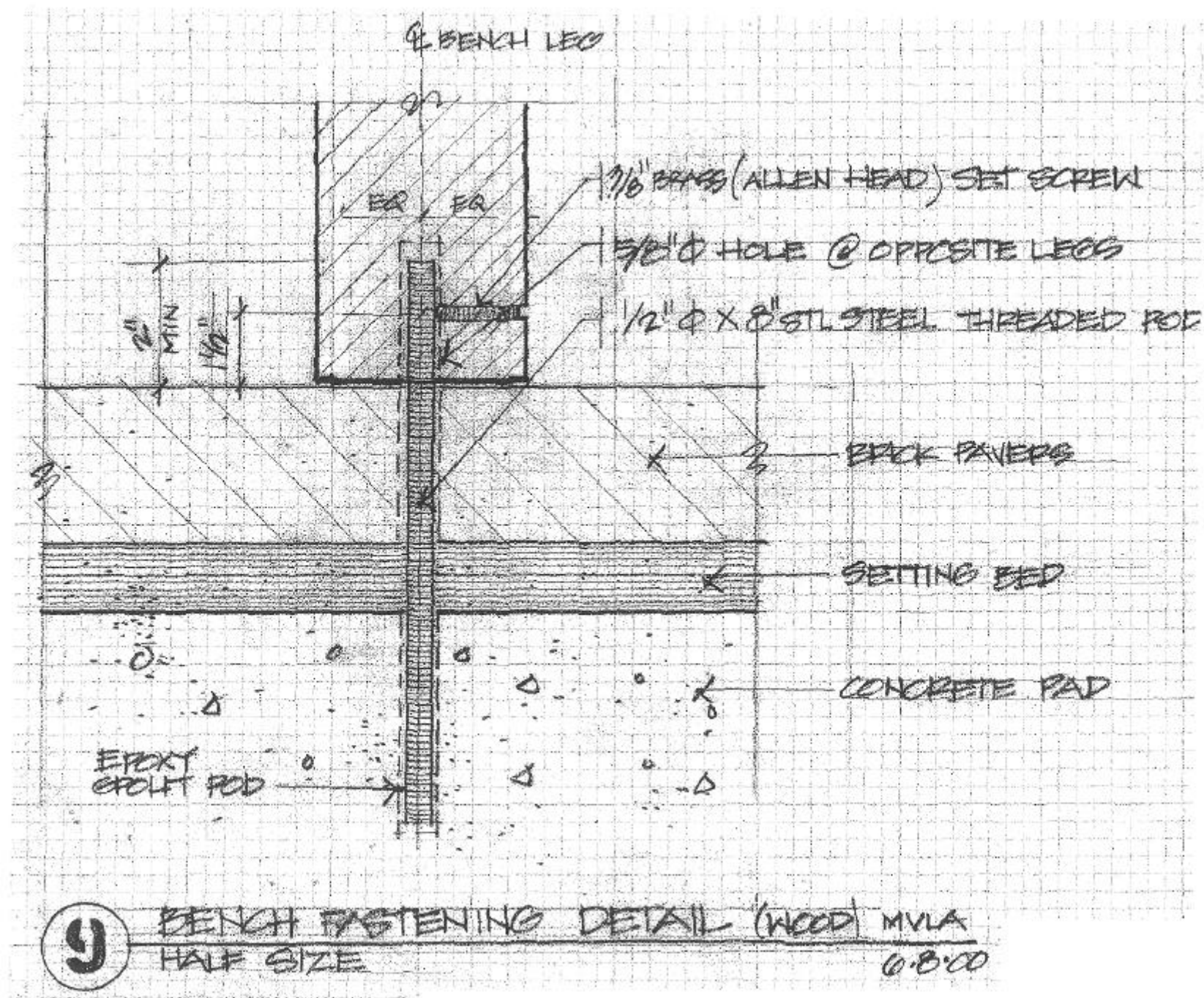
MICHAEL VERGASON
Landscape Architects

Revisions

JHU: OPEN SPACE IMPLEMENTATION - PHASE I
INFORMAL BENCH

August 2001

Sheet 17 of 34



BENCH FASTENING

MANUFACTURER: COUNTRY CASUALS

MODEL NAME: MENDIP

FINISH SPECIFICATIONS: TEAK WOOD



JOHNS HOPKINS
UNIVERSITY
HOMEWOOD CAMPUS
BALTIMORE, MARYLAND



RUMMEL, KLEPPER
& KAHL, LLP
Consulting Engineers



AYERS SAINT GROSS
Architects & Campus Planners



MAHAN RYKIEL
ASSOCIATES INC.
Landscape Architects



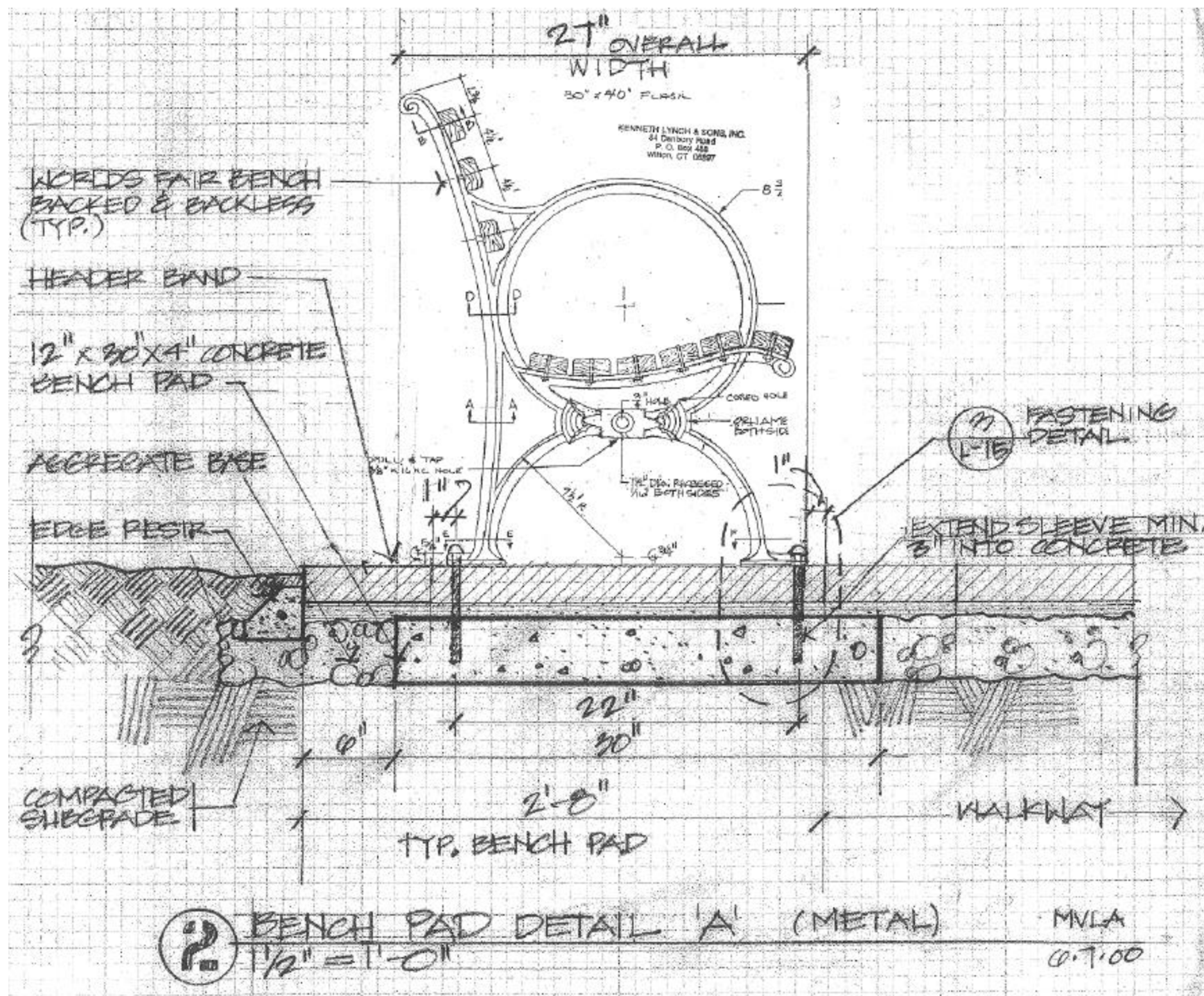
MICHAEL VERGASON
Landscape Architects

Revisions

JHU: OPEN SPACE IMPLEMENTATION - PHASE I
INFORMAL BENCH FASTENING

August 2001

Sheet 18 of 34



FORMAL BENCH

MANUFACTURER: KENNETH LYNCH & SONS

MODEL NAME: WORLD'S FAIR / 6736 (WITHOUT BACK)
WORLD'S FAIR / 6737 (WITH BACK)

FINISH SPECIFICATIONS: CAST IRON ENDS PAINTED TO MATCH
PAINT CHIP FROM JHU PAINT SHOP
(RAL-7022 UMBRAGREY)
IPE BENCH SURFACE



JOHNS HOPKINS
UNIVERSITY
HOMEWOOD CAMPUS
BALTIMORE, MARYLAND



RUMMEL, KLEPPER
& KAHL, LLP
Consulting Engineers



AYERS SAINT GROSS
Architects & Campus Planners



MAHAN RYKIEL
ASSOCIATES INC.
Landscape Architects



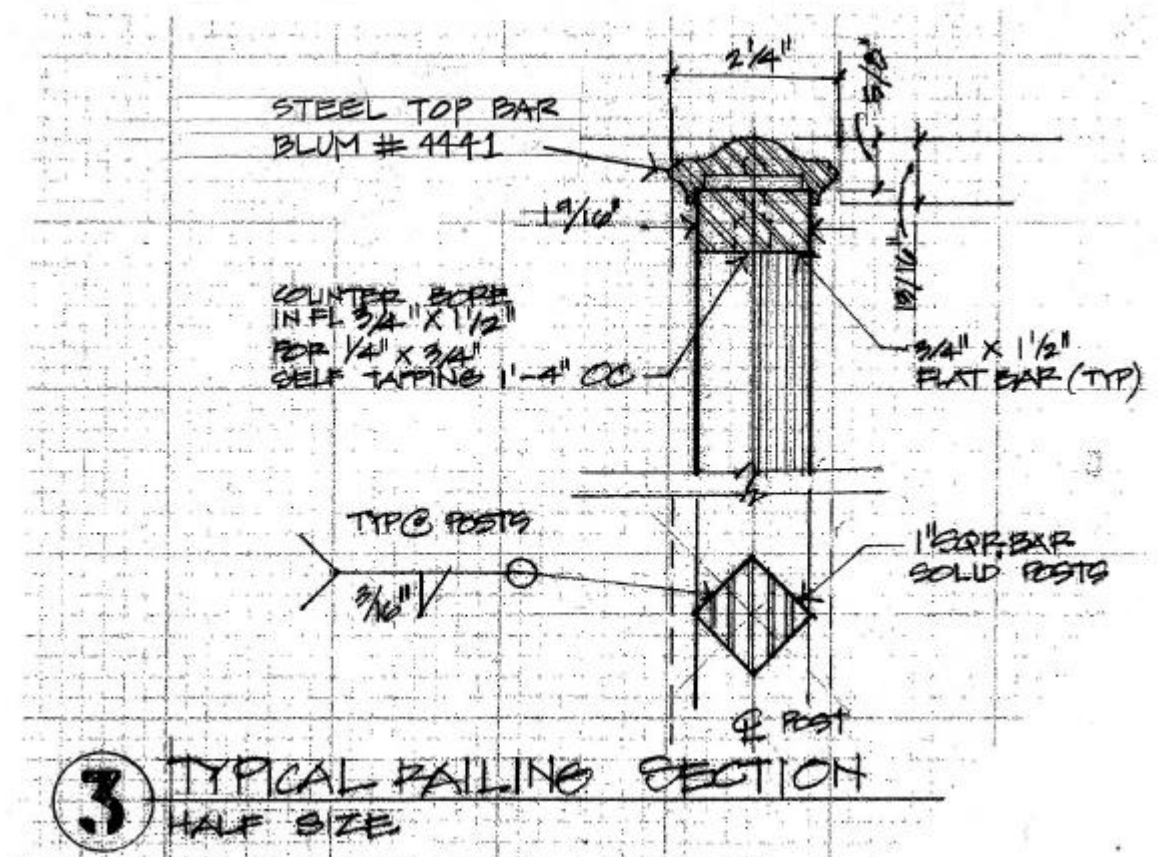
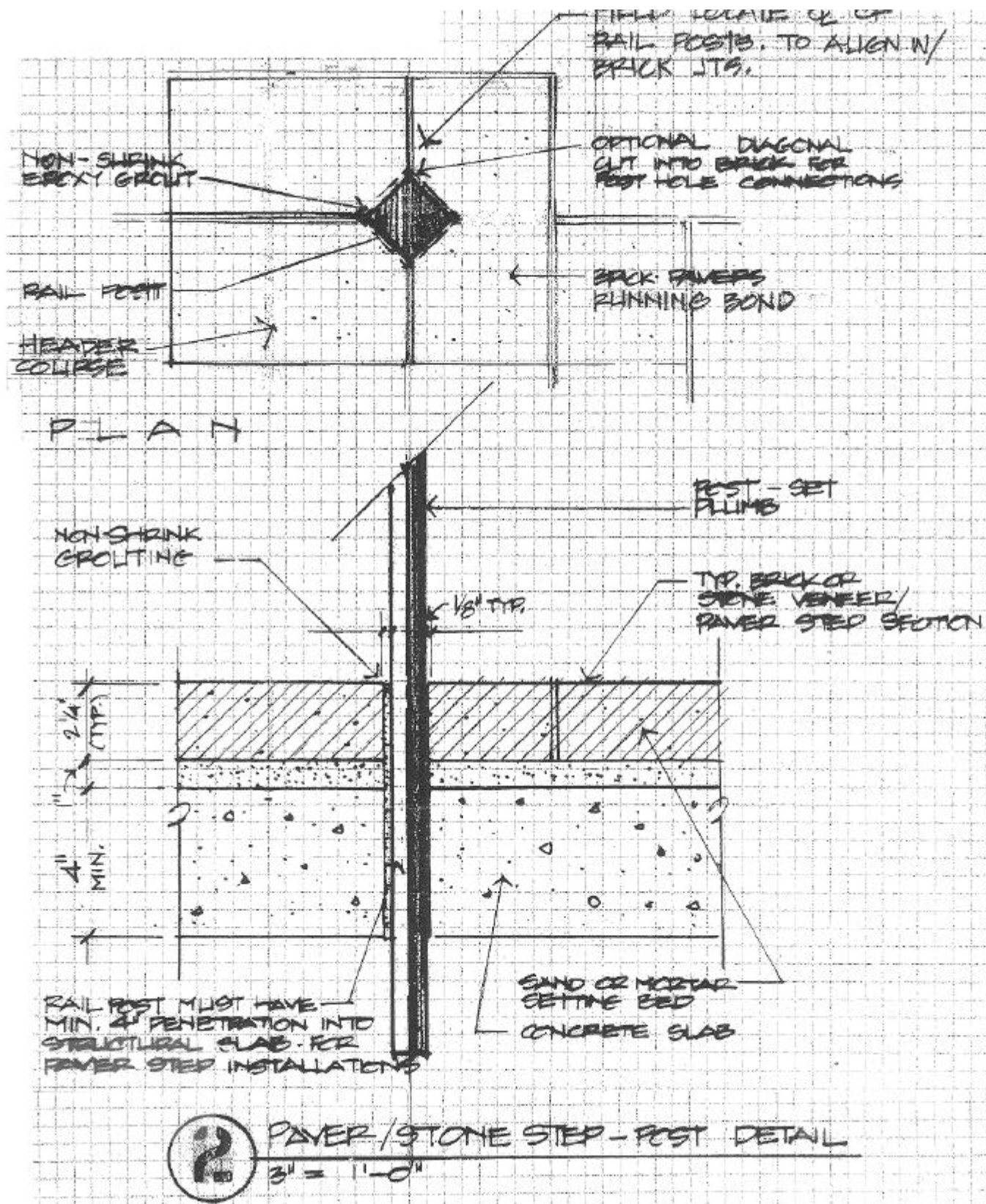
MICHAEL VERGASON
Landscape Architects

Revisions

JHU: OPEN SPACE IMPLEMENTATION - PHASE I
FORMAL BENCH

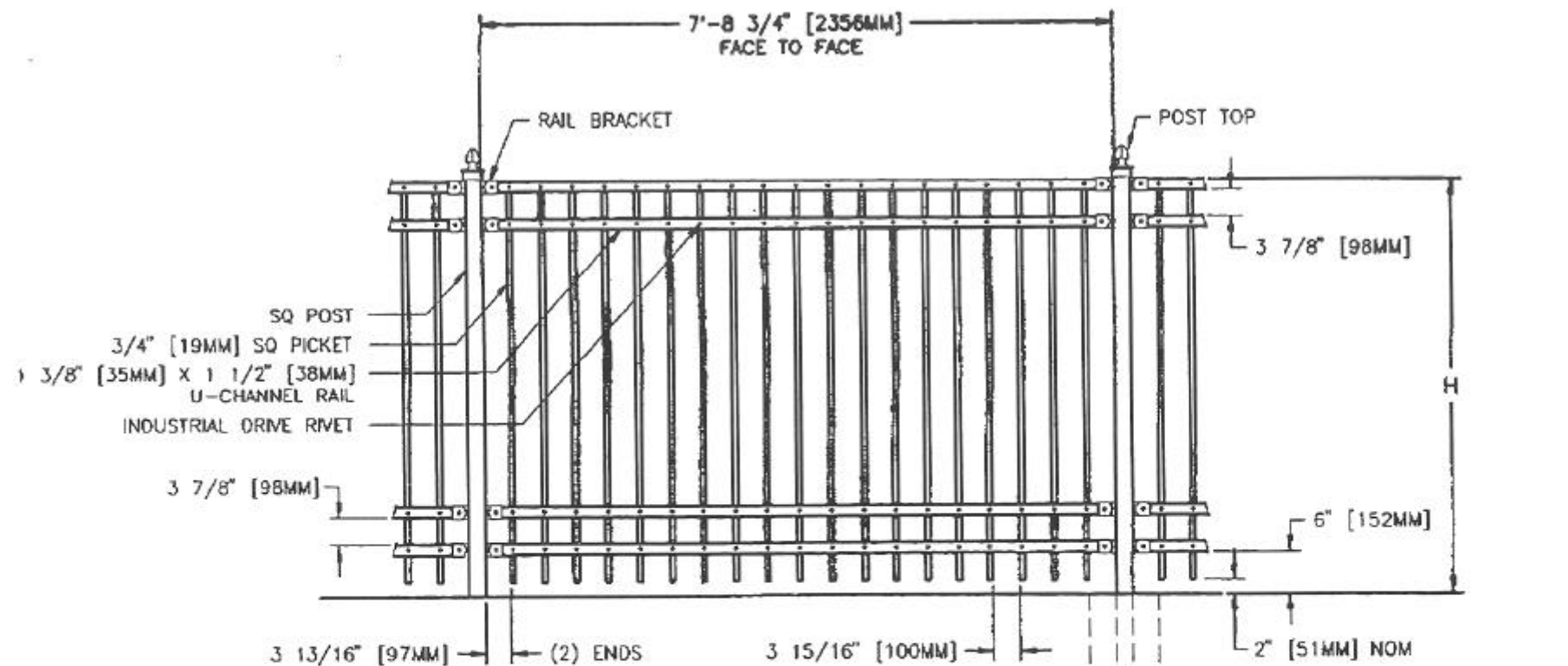
August 2001

Sheet 19 of 34



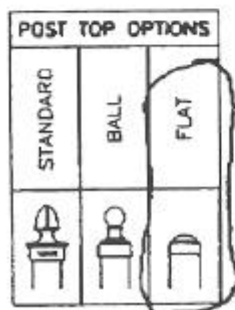
HAND RAILING

MANUFACTURER: JULIUS BLUM
 MODEL NAME: 4441 V (VOLUTE)
 4441 (STEEL TOP BAR)
 FINISH SPECIFICATIONS: PAINT TO MATCH
 PAINT CHIP FROM JHU PAINT SHOP
 (RAL-7022 UMBRAGREY)



FENCE SECTION ELEVATION
SEE DWG 6-1220 FOR 1" PICKETS

- NOTES:
1. METRIC DIMENSIONS ARE NOMINAL EQUIVALENTS TO U.S. DIMENSIONS.
 2. SPECIFICATIONS SHOWN CAN BE CHANGED BY MASTER-HALOO ONLY.
 3. FOOTING WIDTH TO BE (4)X POST WIDTH.



MIN DEPTH
IN: 36"
MM: 914

WIDTH
IN:
MM:

NOM HEIGHT (H)
3'-0" [914MM]
3'-6" [1067MM]
4'-0" [1219MM]
5'-0" [1524MM]
6'-0" [1829MM]
7'-0" [2134MM]
8'-0" [2438MM]

MANUFACTURER: MONUMENTAL IRON WORKS

MODEL NAME: IMPERIAL FENCE STYLE C

FINISH SPECIFICATIONS: PAINT BLACK

NOTE: FENCE WAS NOT INSTALLED IN PHASE I



JOHNS HOPKINS
UNIVERSITY
HOMEWOOD CAMPUS
BALTIMORE, MARYLAND



RUMMEL, KLEPPER
& KAHL, LLP
Consulting Engineers



AYERS SAINT GROSS
Architects & Campus Planners



MAHAN RYKIEL
ASSOCIATES INC.
Landscape Architects



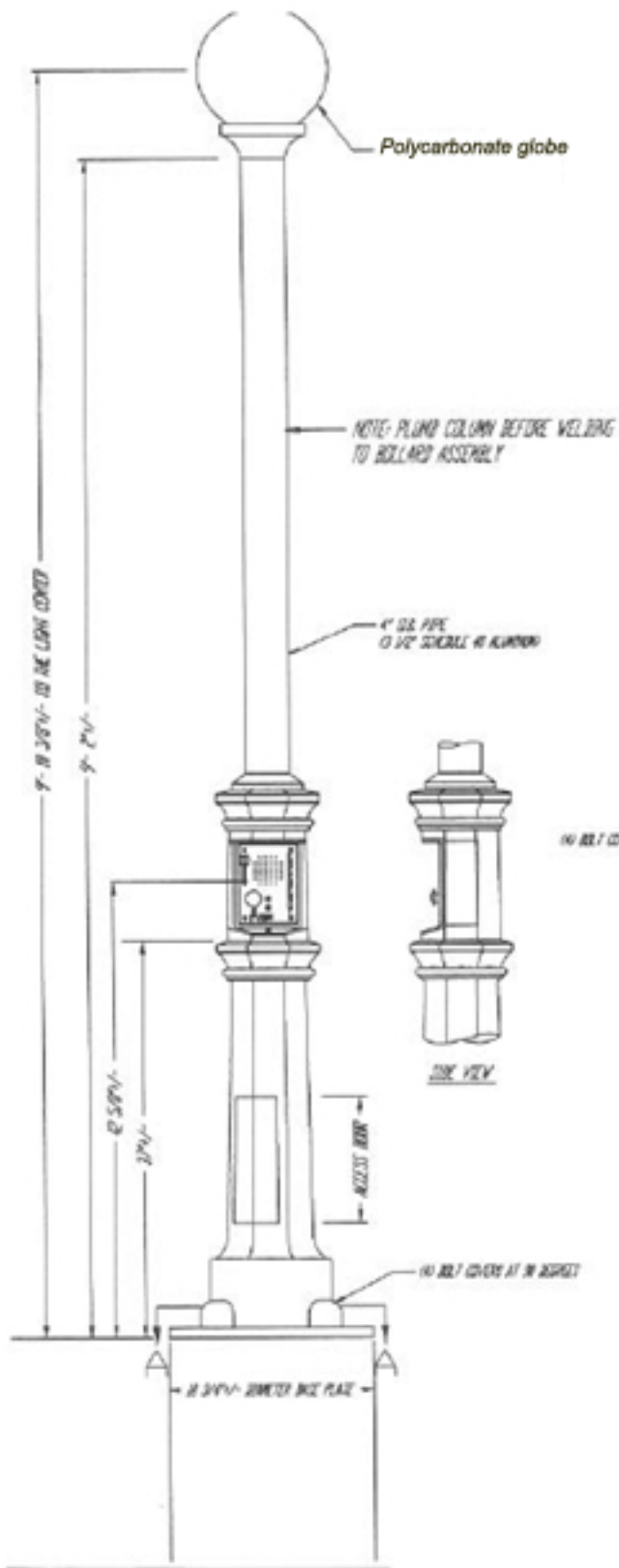
MICHAEL VERGASON
Landscape Architects

Revisions

JHU: OPEN SPACE IMPLEMENTATION - PHASE I
STEEL PICKET FENCE

August 2001

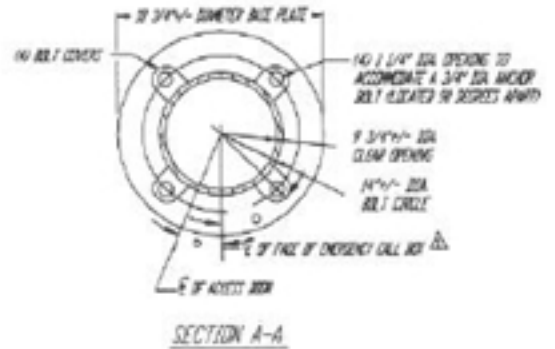
Sheet 24 of 34



LUMINAIRE SPECIFICATIONS	
STYLE	WELLESLEY COLLEGE EMERGENCY
HEIGHT	14 3/8"±
WIDTH	12"± DIA
MATERIAL	CAST ALUMINUM
GLOBE	16" translucent blue globe. Interior sandblasted.
FINISH	PRIME PAINT
LAMPING	INCANDESCENT CLAMP BY OTHERS
VOLTAGE	120 VOLTS
SOCKET	NEC/BM BASE
WIRE TYPE	18 AWG TYPE 6774

EMERGENCY CALL BOX POST	
STYLE	NEWBURYPORT MODIFIED TO ACCOMMODATE EMERGENCY CALL BOX
HEIGHT	9'- 2 1/4"
LIGHT CENTER	3" - 11 3/8"
BASE	10 1/4"± DIAMETER
MATERIAL	NON-FLUTED ALUMINUM PIPE
COLUMN	CAST ALUMINUM ALLOY DRIVEN PER A.S.T.M. B 26-05
BASE	PRIME PAINT, SHERWIN WILLIAMS 2 PART RECOATABLE
FINISH	EPDM POWER COATINGS - PART 6 AND 3C75 - PART 10
ACCESS DEEP	LOCATED IN BASE AS SHOWN
GROUND STUD PROVISIONS	DRILL AND TAP INSIDE WALL OF BASE OPPOSITE ACCESS DEEP TO ACCOMMODATE A 1/4"-IN GROUND STUD (GROUND STUD SUPPLIED BY OTHERS)
ANCHOR BOLTS	10 3/4" X 2 1/4" X 3" HEAVY STEEL GALVANIZED WITH 1 GALVANIZED NUT AND 1 GALVANIZED WASHER PER BOLT 3" REQUIRED
BOLT PROJECTION	2" REQUIRED
TENSION	2" CLOSURE NUTS

QUANTITY:..... 9 REQUIRED



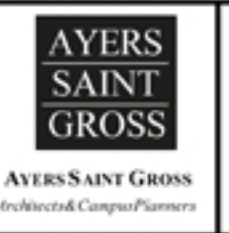
EMERGENCY CALL BOX POLE

EMERGENCY CALL BOX ENLARGEMENT

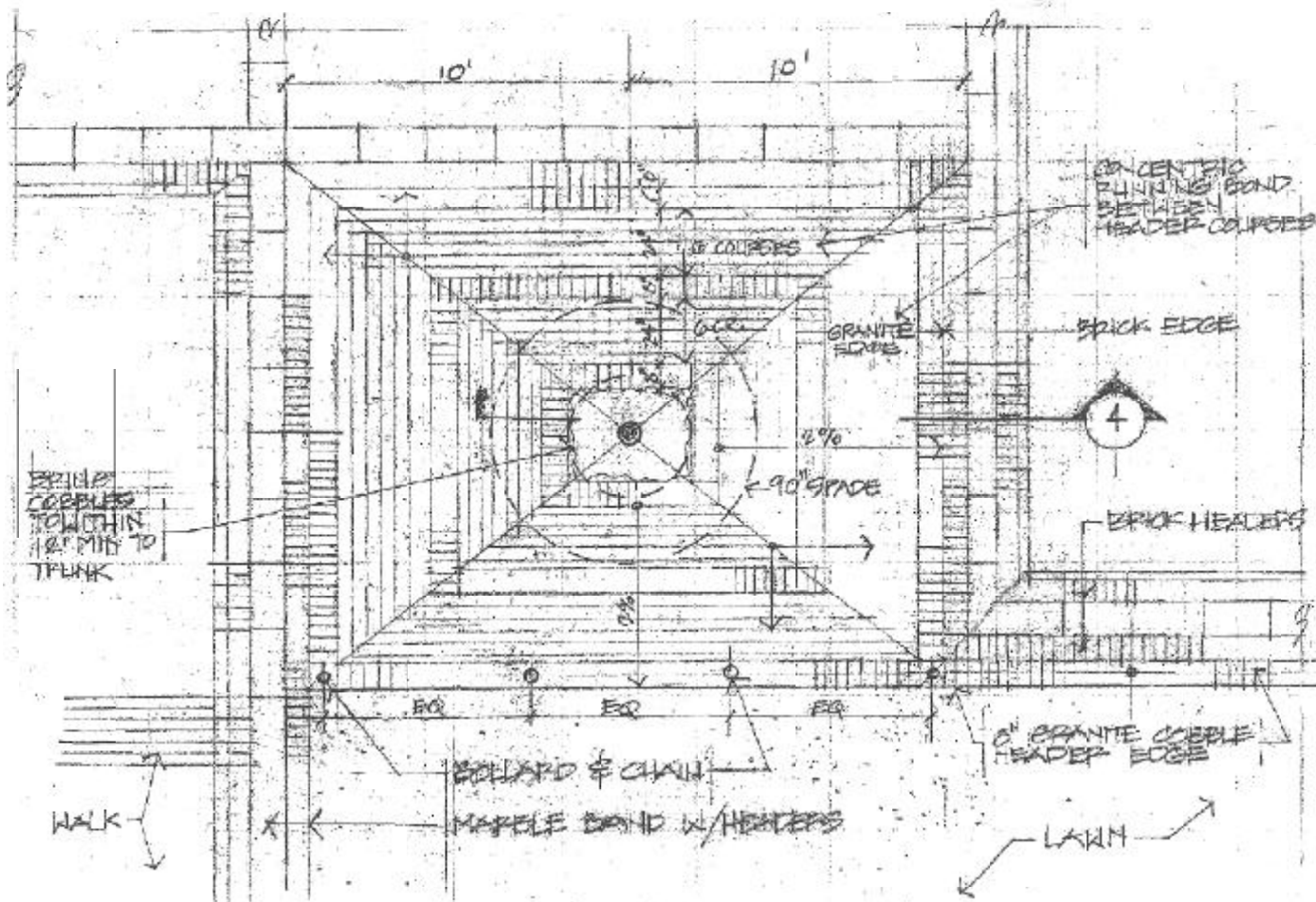
POLE MANUFACTURER: SPRING CITY ELECTRICAL MANUFACTURING CO.
MODEL NAME: NEWBURYPORT MODIFIED 9'-2" POST
(CONTACT JHU FOR ELECTRICAL COMPONENTS LIST)

FINISH SPECIFICATIONS: PAINT TO MATCH PAINT CHIP FROM JHU PAINT SHOP
(RAL-7022 UMBRA GREY)

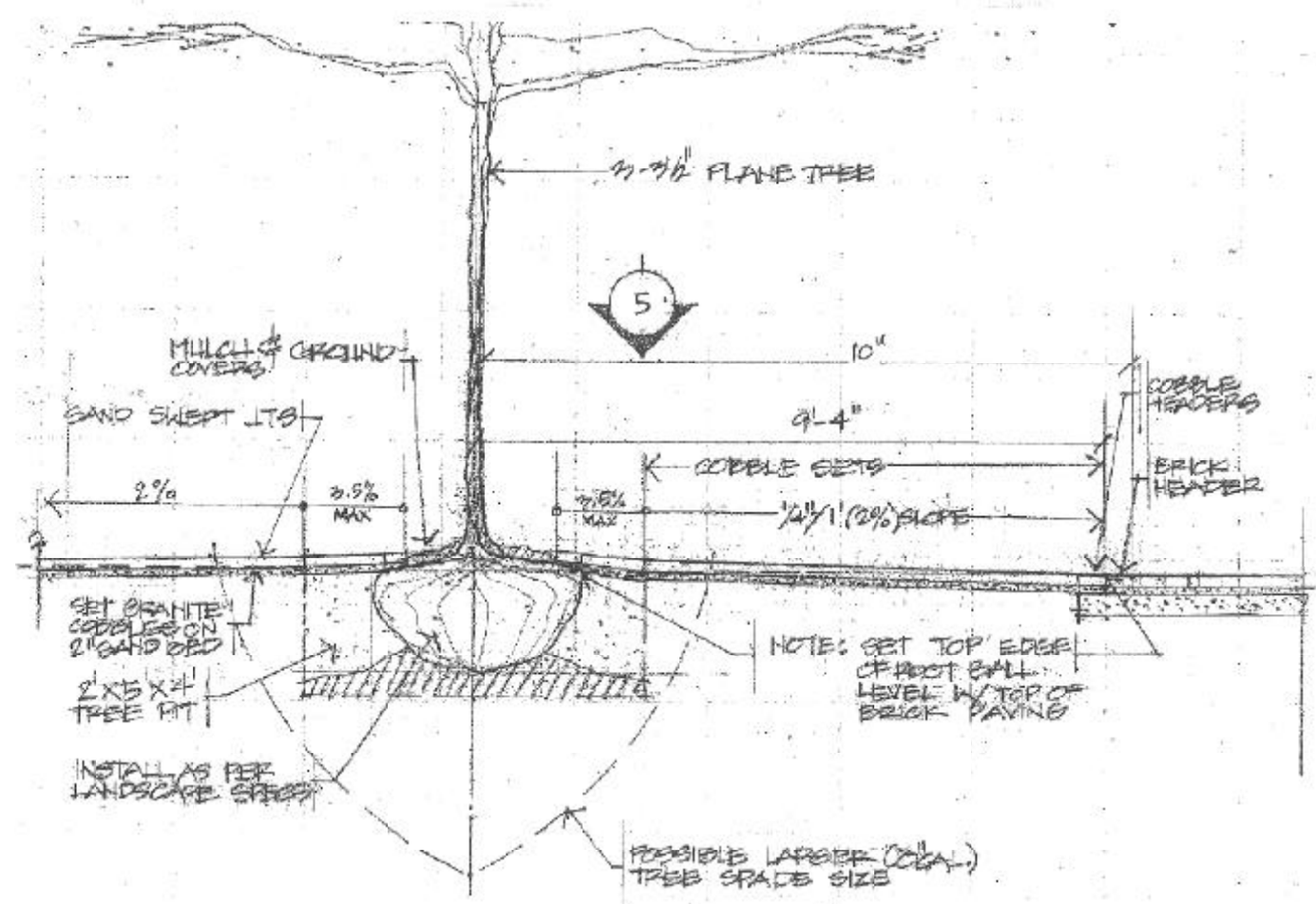
NOTE: POLE AND ELECTRICAL COMPONENTS ARRIVE IN SEPARATE PACKAGES.
ASSEMBLY AND INSTALLATION BY CONTRACTOR INCLUDING SIREN, TELECOM
AND POWER. JHU TO ADVISE CONTRACTOR AS NEEDED.



Revisions
01-2006 Globe revisions



5 COBBLE PLANTER DETAILS
 1/4" = 1'-0"
 MMA 4-10-01



4 DETAIL COBBLE PAVEMENT SECTION
 1/2" = 1'-0"
 MMA 4-10-01

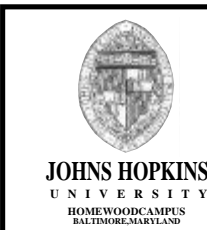


TREE PIT

MANUFACTURER
 (GRANITE COBBLES): NEW ENGLAND STONE, INC.

MODEL NAME: WOODBURY S

FINISH SPECIFICATIONS: 5 SIDES SPLIT FACE,
 SAWN BOTTOM

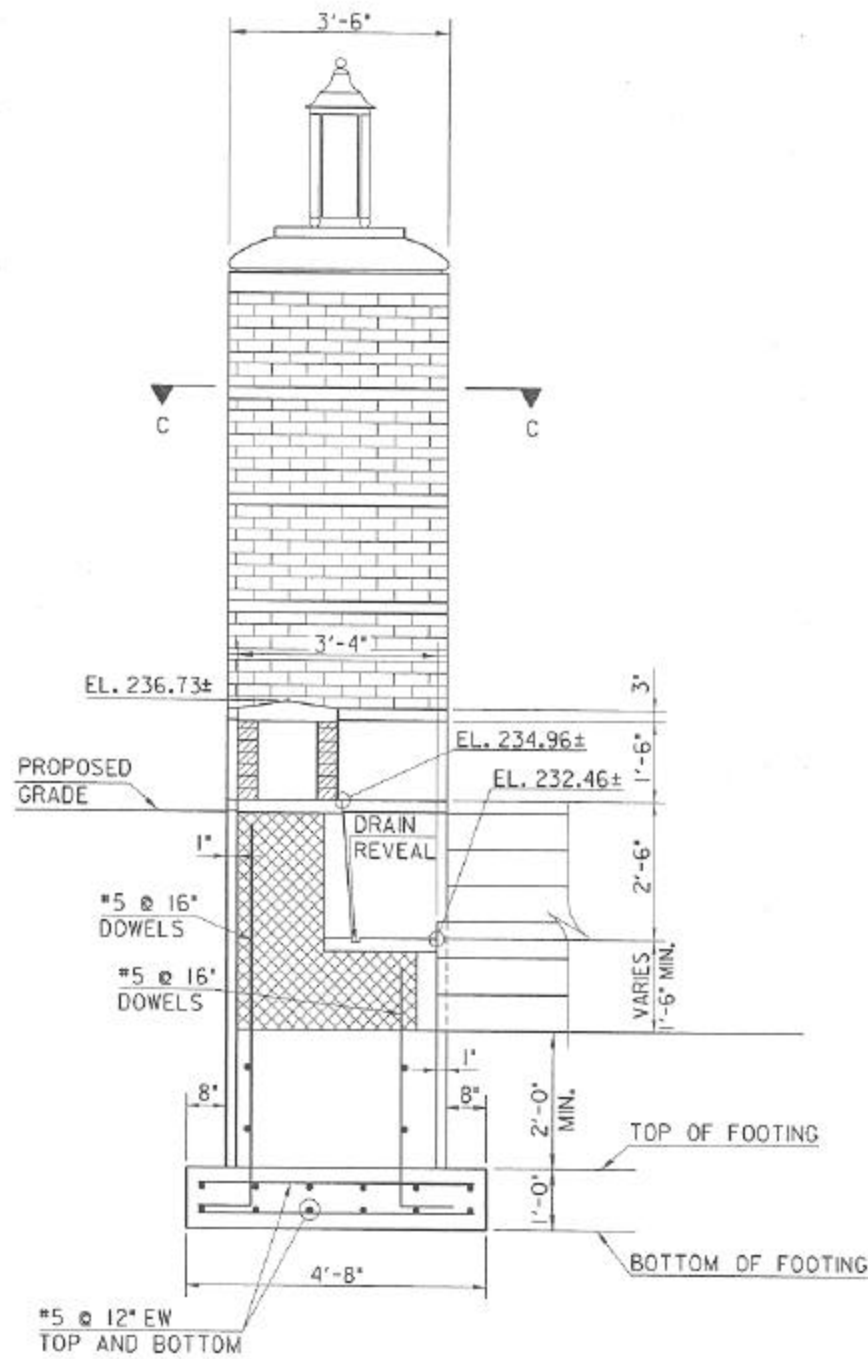


Revisions

JHU: OPEN SPACE IMPLEMENTATION - PHASE I
TREE PIT

August 2001

Sheet 30 of 34



TYPICAL SECTION - SEAT WALL AND PIER
NOT TO SCALE

CONCRETE MASONRY UNIT WALL
WITH BRICK/STONE FACING BOTH
SIDES AND MARBLE/CLIT STONE CAP



VIEW FROM LOWER QUAD



VIEW FROM UPPER QUAD



MARBLE SEAT WALL AND PIER

BRICK MANUFACTURER: REDLAND BRICK, INC.

MODEL NAME: GEORGIAN MODULAR

MARBLE MANUFACTURER: GAWET MARBLE &
GRANITE, INC.

MODEL NAME: DANBY GREY

FINISH SPECIFICATIONS: EXTERIOR HONED (EXPOSED
SURFACE ONLY)



JOHNS HOPKINS
UNIVERSITY
HOMEWOOD CAMPUS
BALTIMORE, MARYLAND



RUMMEL, KLEPPER
& KAHL, LLP
Consulting Engineers



AYERS SAINT GROSS
Architects & Campus Planners



MAHAN RYKIEL
ASSOCIATES INC.
Landscape Architects



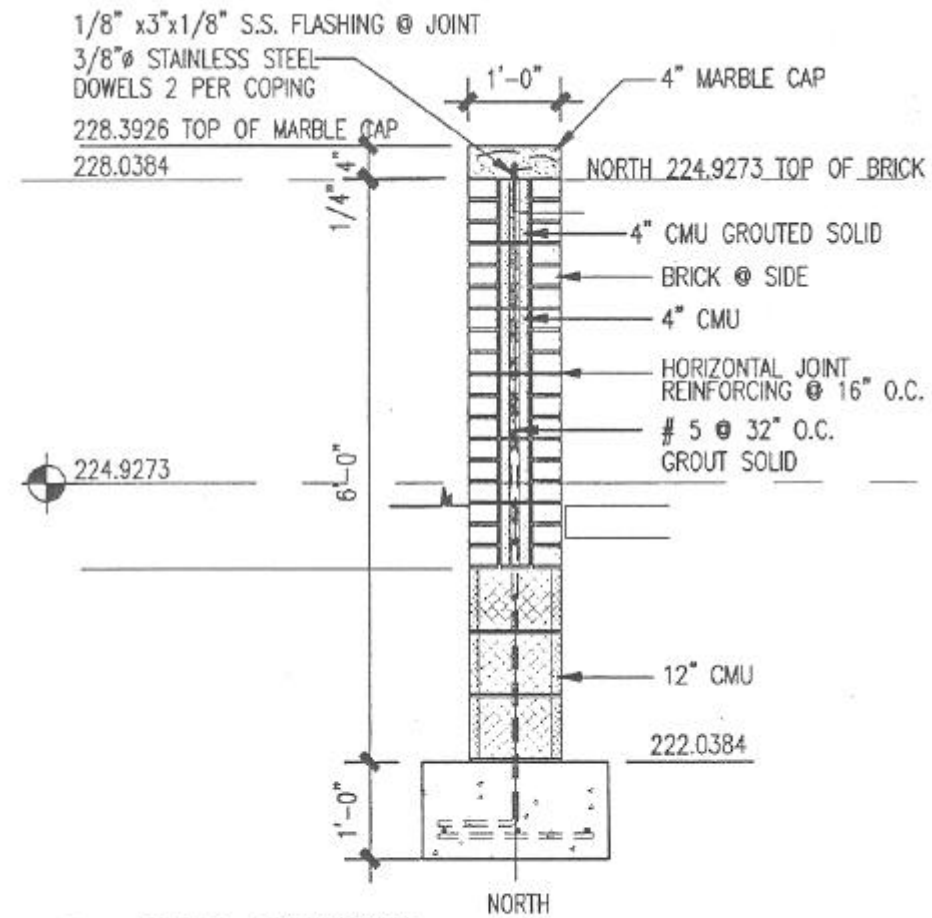
MICHAEL VERGASON
Landscape Architects

Revisions

JHU: OPEN SPACE IMPLEMENTATION - PHASE I
KRIEGER COURT

August 2001

Sheet 32 of 34



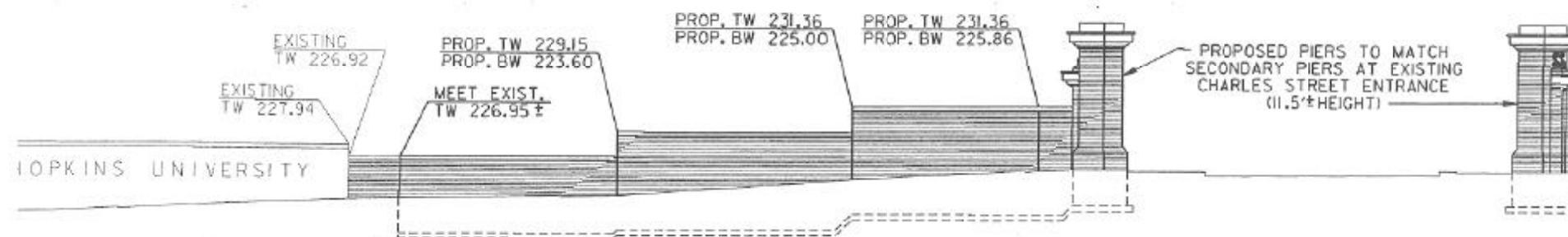
10 WALL SECTIONS
A1.01A 1/2"=1/8"



PICTURE FROM HOMEWOOD HOUSE



PICTURE FROM CHARLES STREET



BRICK MANUFACTURER: BORAL

MODEL NAME: MODULAR KING WILLIAM

MARBLE
MANUFACTURER: GAWET MARBLE & GRANITE (QUARRY)
HILL GARTNER NATURAL STONE (MASON)

MODEL NAME: DANBY GREY

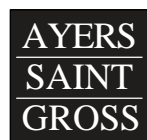
FINISH SPECIFICATIONS: EXTERIOR HONED (EXPOSED SURFACE ONLY)



JOHNS HOPKINS UNIVERSITY
HOMEWOOD CAMPUS
BALTIMORE, MARYLAND



RUMMEL, KLEPPER & KAHL, LLP
Consulting Engineers



AYERS SAINT GROSS
Architects & Campus Planners



MAHAN RYKIEL ASSOCIATES INC.
Landscape Architects



MICHAEL VERGASON
Landscape Architects

Revisions

JHU: OPEN SPACE IMPLEMENTATION - PHASE I
JHU SIGN WALL AT CHARLES STREET

August 2001

Sheet 33 of 34

